

The **KETCHUP** is NOT Quite **KAUGHT UP**
But it's getting' there...Yes, time for the frequently infrequent
McKinstry Newsletter

MAY IPMS/ McKinstry 2019

IPMS/USA Chapter

Club Officers

Norris Graser President

Frank Ress Vice Pres. /Programs

Mike Hanlon Secretary/Treasurer

Paul Gasiorowski Chapter Contact

The Tick

Frank Ress

Newsletter Editor

McWeb Master

McWeb: <https://ipms-mckinstry.org/>

Page 2-6 April meeting images Show n' Tell

Page 7-9 Article; Filling Seams on a Dino! By Norris Graser

NOTE to all; If you build a model and bring it to the meeting, at least be prepared to email the *Tick* info . Enough times to mention, I get no response from some members and will have to determine whether I will take the time to do your legwork for you or just not publish it.

MAY MEETING

The May meeting theme was Dnosurs ...Sooo in keeping with the theme, Mike Hanlon brought in several armor kits.. Mike only provided links for each so this is all just box/history info

Mike Hanlon



1/48th Scale Tamiya JGSDF Type 16 Maneuver Combat Vehicle. A modern armored vehicle reaching units in 2017, an 8 wheeled vehicle it is highly mobile and well-armed vehicle intended to provide supporting fire as part of a rapid response unit.



Tamiya JSDF paints used for all 3 models



The type 10 was originally commissioned in 2010 and is a new cornerstone for the Japan Self Defense Force. It features a Japanese made 120mm main gun, with modular armor and is highly maneuverable



1/48th Scale Tamiya JGSDF Type 10 Main Battle Tank



1/48th Scale Tamiya JGSDF Light Armored Vehicle



Aside from a 5.56mm machine gun, it can also use a 12.7mm M.G., or anti tank weapons. In service since 2002

Lee Lygros



Stegosaurus is Lindbergh. Luftwaffe Model Master Colors. Decals from my spares box. Loading crew 1/48th scale DML Luftwaffe bomb loaders.

The arrangement of spikes originally had no distinct name; the term *Thagomizer* was coined in 1982 by cartoonist Gary Larson in his comic *The Far Side*, and thereafter became gradually adopted as an informal term within scientific circles, research, and education

Frank Ress



Initial build-up of a diorama depicting a pack of velociraptors ambushing a baby hadrosaur. Just to keep things interesting, there's also a crocodilian taking aim at one of the raptors.

The base is a piece of 5/8 plywood, and Styrofoam shapes form the rough structure for a riverbank setting.



The raptors are a 1/35 Tamiya kit. The hadrosaur and crocodile are taken from another Tamiya kit that includes 6 different species.

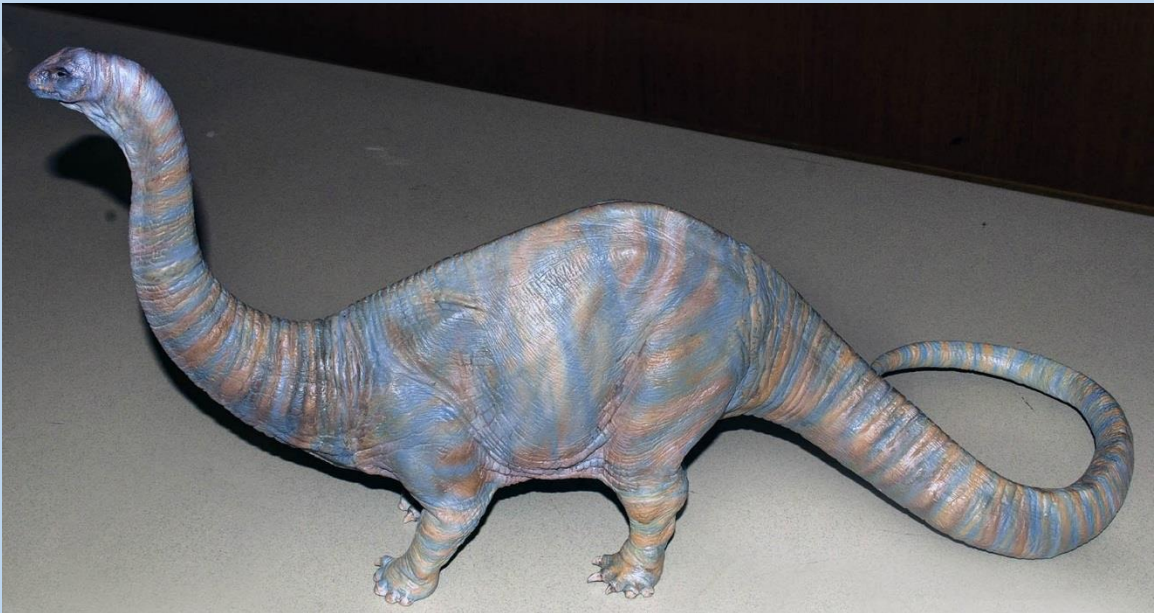
Charlie scardon



1st photo is 1/35 Kaiyodo Dinoland Maiasaurus. Vinyl kit consisting of seven parts. It is painted with Model Masters Creme and French Chestnut. I started with the lighter color on the bottom and progressively added the darker color in to blend shades until I reached the top. I then used the Chestnut straight and blended down. 2nd photo has the 1/35 scale Tamiya Chasmasaurus and baby, Velociraptor, Oviraptor, and Hypsilophodon. The Styracasaurus and Dimetrodon are from a vendor on Shapeways. I have no ideas what colors I used. That will screw me over if I have to touch up the bodies. Still working on eyes, horns and claws.

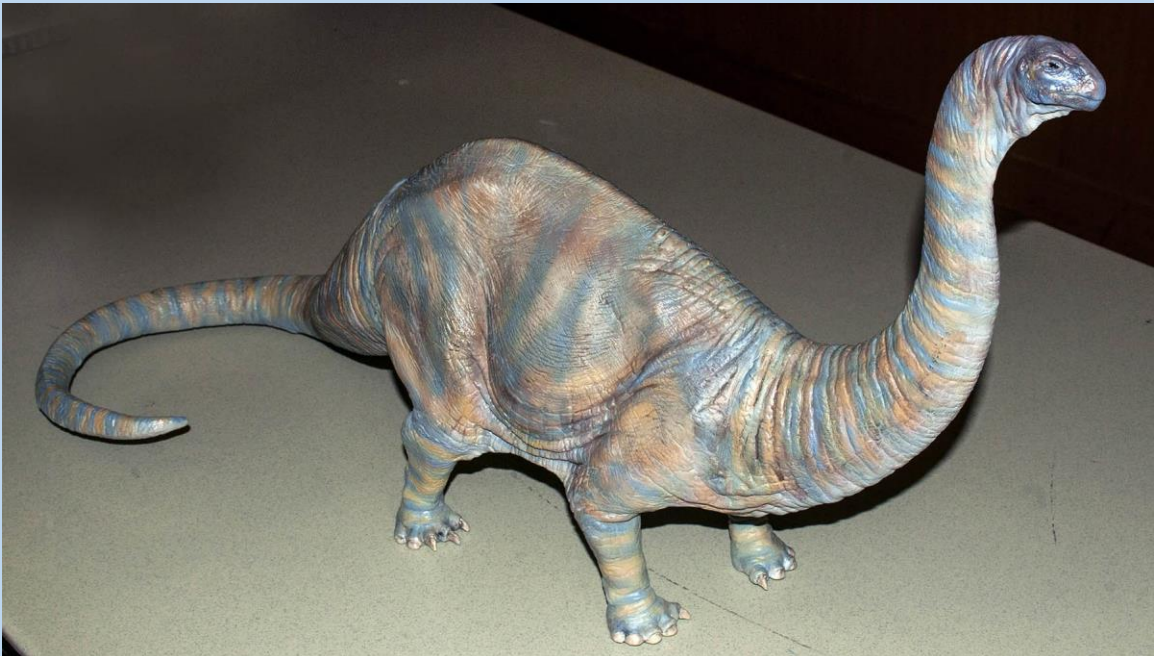


Norris Graser



1/13th scale Horizon dinosaur series Apatosaurus

Released in 1993. I really enjoyed putting together this simple 10 piece hollow vinyl model of what Horizon calls an Apatosaurus. Of course, I am old school and grew up calling it a Brontosaurus and since it's a tail dragger THAT'S what it is! There is a story behind the 2 names and I'd encourage anyone curious enough to do a search for that info. AND there is now info that shows 2 distinct dino types. To put a vinyl kit together involves soaking in hot water to make the parts pliable. Some cutting and trimming of mating surfaces is necessary but easy. Filling seams likewise, is easy. I used Miliput 2 part filler, and cloned the adjacent skin texture to blend. Paints are Model Master and Gunze Sangyo. Overall colors are Desert Sand, 34237 Blue Grey, 36081 Dark Grey, and Rust Brown.



Filling Seams On A Dino!



A Work In Progress...

by Norris Graser

It has been a long time since I have built anything other than an aircraft model so when Charlie brought up having a Dino-Nite for McKinstry, it sparked my interest. It's been interesting catching up on the types of medium used for building dinosaurs now. A good example is Pegasus. They have 3 really well sculpted kits. In 1/24-scale, they are very easy to assemble. Made of solid PVC material, they are "hefty" models.



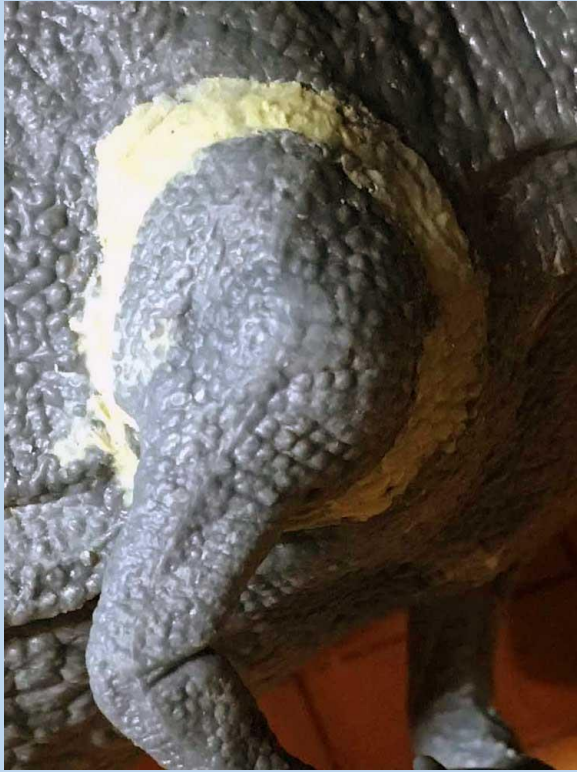
I selected their TRex. The parts are attached with Super glue and fit well with the exception of the lower jaw. The jaw had a large gap no matter how much testing and fitting I did. Not to worry though, I used 2

part epoxy to bond the jaw, tongue and head together.

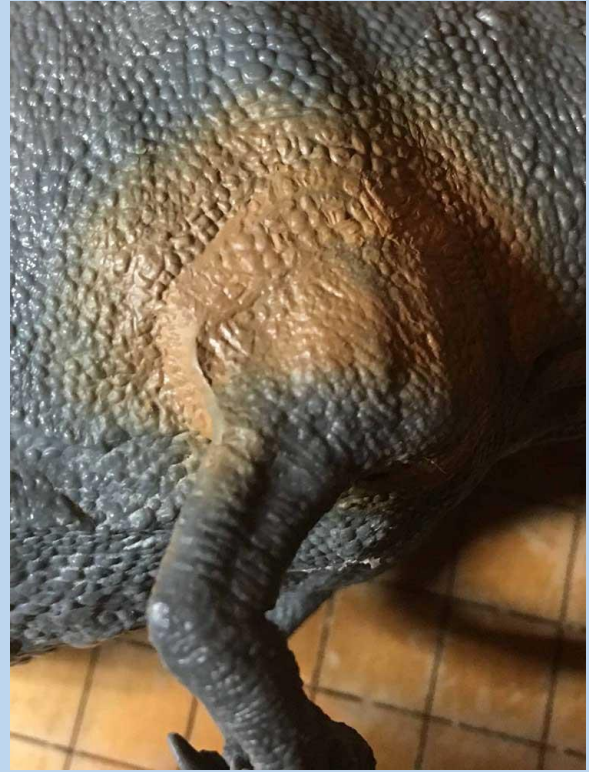
I enjoyed the next step of the build! Filling seams. Yeah, I know! Who the hell wants to fill and sand seams? Well, I do. Working with dinosaurs is different from working on your favorite aircraft model. This is how it works; simply fill the seams and gaps with Milliput two part filler, press it into any gap you see and then with a little water, smooth the material and blend it in with a finger. Any finger will do, just pick one you are comfortable with. You have at least half an hour to work with the putty. Next, use a two part mold compound.



Knead it together. Depending on whose product you use, setting time can vary a bit. Once the compound slightly stiffens, press it onto an area of skin adjacent to your filled seams to “clone” the skin texture. Then, let it set completely. It usually takes a minute or two to stiffen up. Next, simply press the cloned skin texture into the setting Milliput! That’s it. When dry, test paint the area for appearance. If it doesn’t blend in to your liking, you can lightly sand and repeat the process. If you do have to sand a bit, lay a bit more Milliput over the area where you have lost detail and repeat the process until you are satisfied with the result.



Milliput putty applied around the arm to body fit. Clone stamp applied



When dry, paint applied to see if desired effect was created.





All but the jaw had minimal gaps. I glued the jaw to head with Duco 2 part epoxy and when dry, applied Milliput putty, smoothed it over with water. With more pronounced ridges on the throat, I did used a dental tool to sculpt the area and then used a clone stamp for texture



I let the work cure overnight and then gave it a test coat of paint achieving this acceptable result.

That's all for this Issue!! The *Tick*